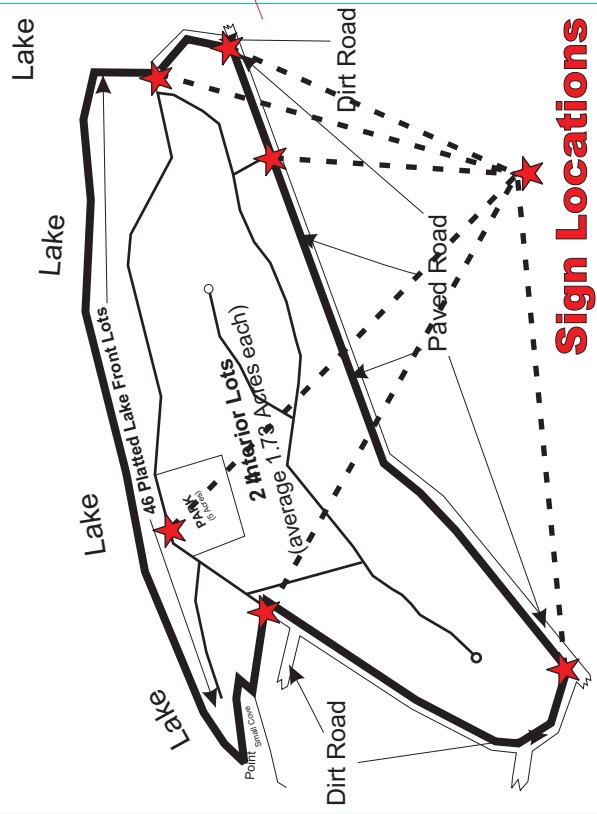


Paradise Bluffs at Grand Lake

www.ParadiseBluffs.com



Lines on the interior of Paradise Bluffs are rough-in roads. 4wd can easily handle these. Park has been rough cleared only.

Old Boy Scout entrance
(0.8 miles from Hwy 10)

Ice Box
Resort
Sign

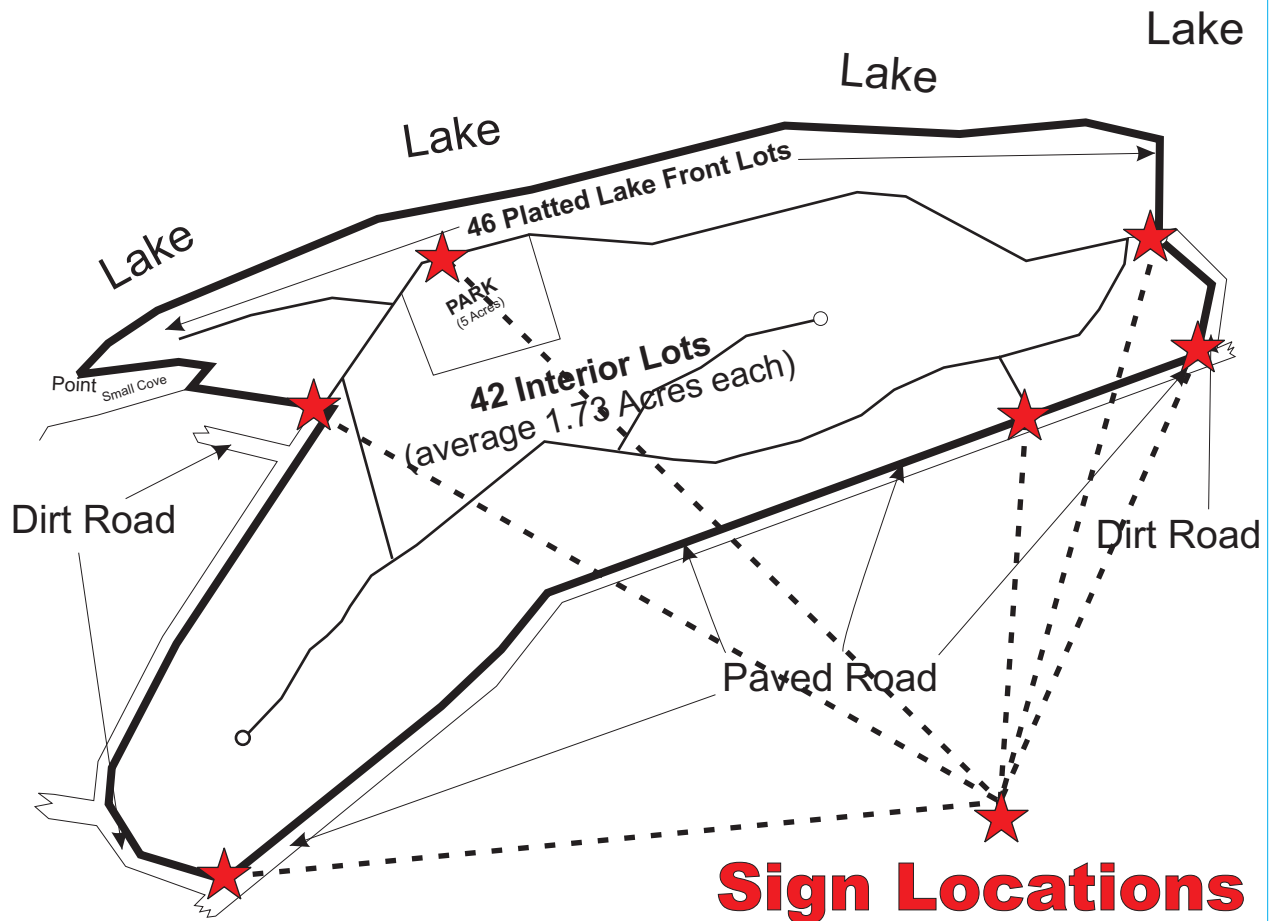
Paved Road "Y"
Stay Right
(2.6 miles from Hwy 10)

Written Directions

Cross Sailboat Bridge and continue on 59 through Grove. Turn North on Highway 10, 6.3 miles to E225 Rd (That's 2.5 miles past Cowskin Bridge) This Paved Road "E225 Rd" is marked by the Ice Box Resort sign, 0.8 Miles to the old Boy Scout Entrance (Go Straight), then 1.8 Miles to "Y" with other Paved Road (Stay Right), then 1 Mile to Paradise Bluffs Entrance.

Paradise Bluffs at Grand Lake

www.ParadiseBluffs.com



- Lines on the interior of Paradise Bluffs represent rough-in roads. 4wd can easily handle these.
- Park has been rough cleared only.
- 115 acres
- over 4,000 feet of shoreline